

Advanced Resource Planning



It sometimes takes **more than a machine** to produce an order.

Planning must integrate **all relevant resources**.

A red line graph with a white dot and a vertical line pointing to the word 'Motivation'. The line starts at the bottom left, dips slightly, then rises steadily to the right, ending at a white circle on the far right edge. A vertical red line connects a white dot on the curve to the word 'Motivation' below it.

Motivation

"We need **tools** and other **equipment** besides our machines to manufacture our products. These resources should be accounted for in the planning process."

"Material is **critical** in our production. During planning, this must be considered."

"Our manufacturing processes are **energy-intensive**, so we have to keep a close eye on the energy quota available to us. Failing that, it costs a lot of money."



Your Issue



- Increase transparency of your planning.
- Integrate all required resources into the planning:
 - Tools
 - Material
 - Energy
- Reduce resource conflicts.



Our Solution

With the mApps of the FEDRA category Advanced Resource Planning, you can...

- ... integrate tools and other equipment into planning.
- ... identify resource conflicts at a glance.
- ... consider indirect dependencies and material relationships in planning.
- ... calculate future material stocks based on current planning.
- ... plan energy demand and supply.
- ... avoid peak loads and penalties.



APS FEDRA





Energy Demand
Planning

Predictive Material
Planning

Secondary
Resource Planning

mAPPS



**Advanced Resource
Planning mApps**



Increase planning reliability

Integrate all required resources

Save energy costs

Less penalties because of peak loads

Reduce waiting times

Early material availability check

Keep an eye on everything

Multidimensional planning incl. synchronization

Your Benefits

Use **APS FEDRA** Advanced Resource Planning to integrate production resources and tools as well as material and energy into your planning.



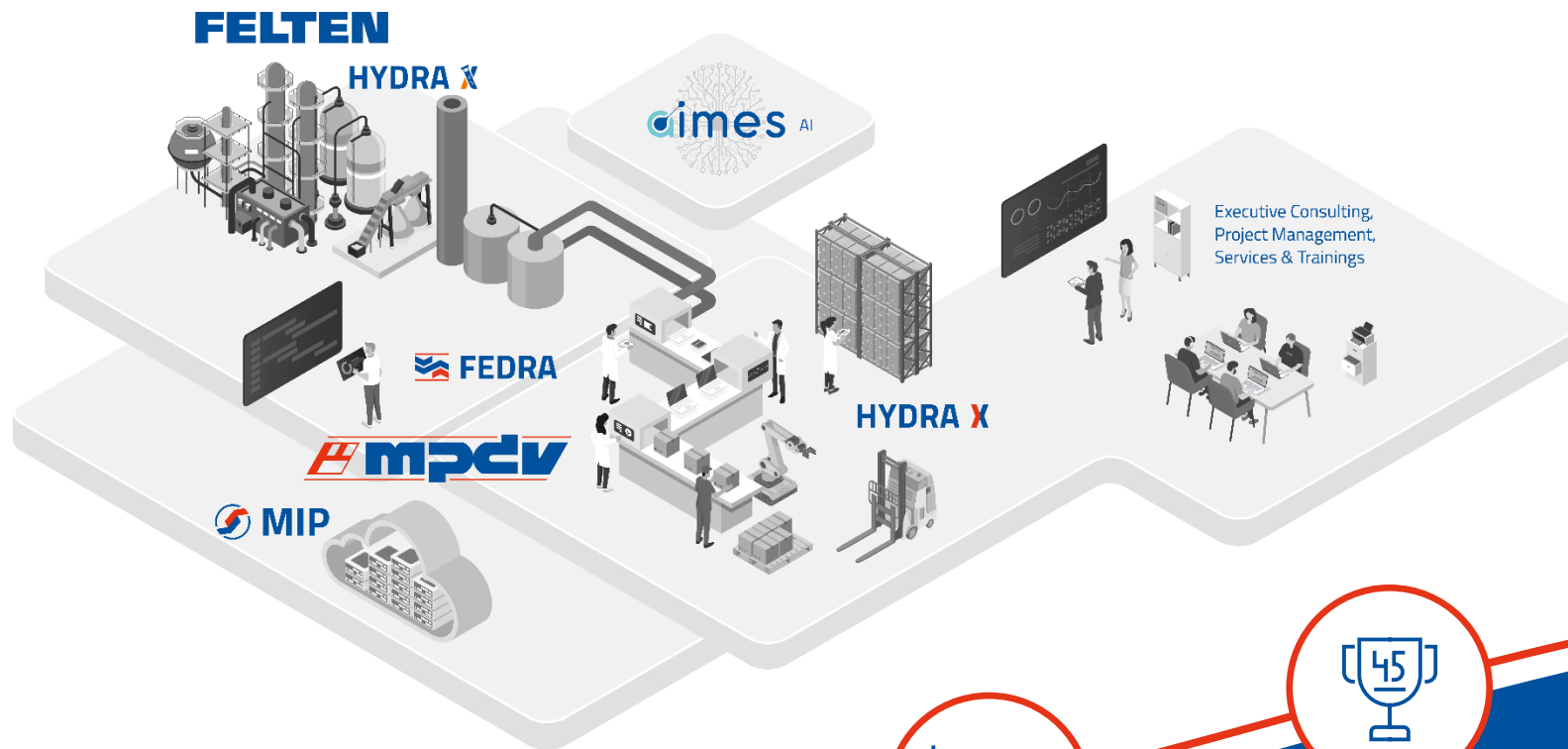
Profit Now!

A photograph of a modern industrial building complex. The main building is white with blue accents and multiple windows. A smaller building with a blue roof and large glass facade is on the right. The sky is blue with white clouds. A red line with a white circle at the end is in the foreground.

About MPDV

WE CREATE SMART FACTORIES



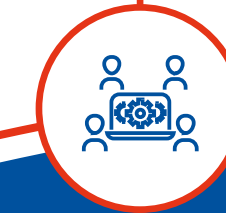


people work with our
solutions every day

1.485.000

installations in all
industries

2.430



13

locations worldwide



530

employees



80 Mio.

euros
group turnover



45

years in the market &
market leader for
manufacturing IT

Would you like to learn more about APS FEDRA?



WE CREATE SMART FACTORIES



www.mpdv.com



info@mpdv.com



[+49 6261 9209 101](tel:+4962619209101)



Contact